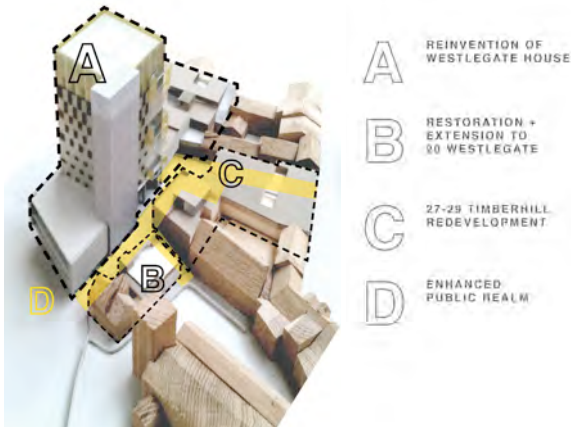


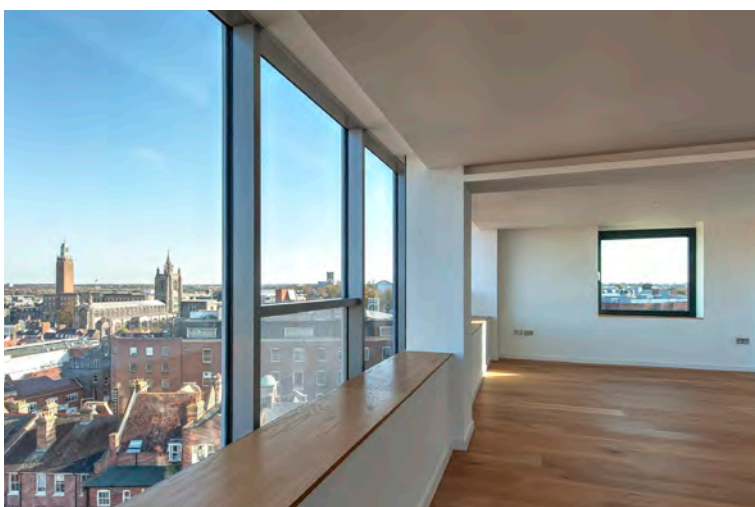
Westgate Quarter, Norwich

Client: FW Properties + Soho Estates
Collaborators: Rossi Long Consulting, BSD, Bremner Partnership, Davis Langdon, Lanpro



This project has redeveloped one of Norwich's most high profile buildings – the 10-storey Westgate Tower – together with its immediate urban setting, blighted by the creation of the tower in the early 1960s. The transformation has involved the addition of an additional three storeys to the previously squat tower, increasing the verticality and creating a new 'crown' for the building. A new envelope deploys a series of patterns across its facades - downplaying the consequences of its new residential occupation in favour of a coherent and elegant order which responds to its role as a city-scale landmark.

Alongside this, the relationship of the base of the tower to its small-scale historic context has been carefully adjusted. A new building on the former car park and an extension to the listed 20 Westgate, help to re-establish the historic grain of lanes, yards and passageways: re-discovering the lost Lion & Castle Yard as a public thoroughfare between Westgate and Timberhill, and thus delivering for Norwich the desired urban connectivity which the tower had obliterated.



Top Overview drawing describing the ingredients of the scheme
Middle The new open plan living space of a penthouse flat.
Above Living space within the refurbished Westgate tower.
Right Staircase within the common entrance to the residential tower



Above View from All Saints Green, illustrating the relationship of the tower to the adjacent church.

Below Before and after view of the tower from Timberhill

