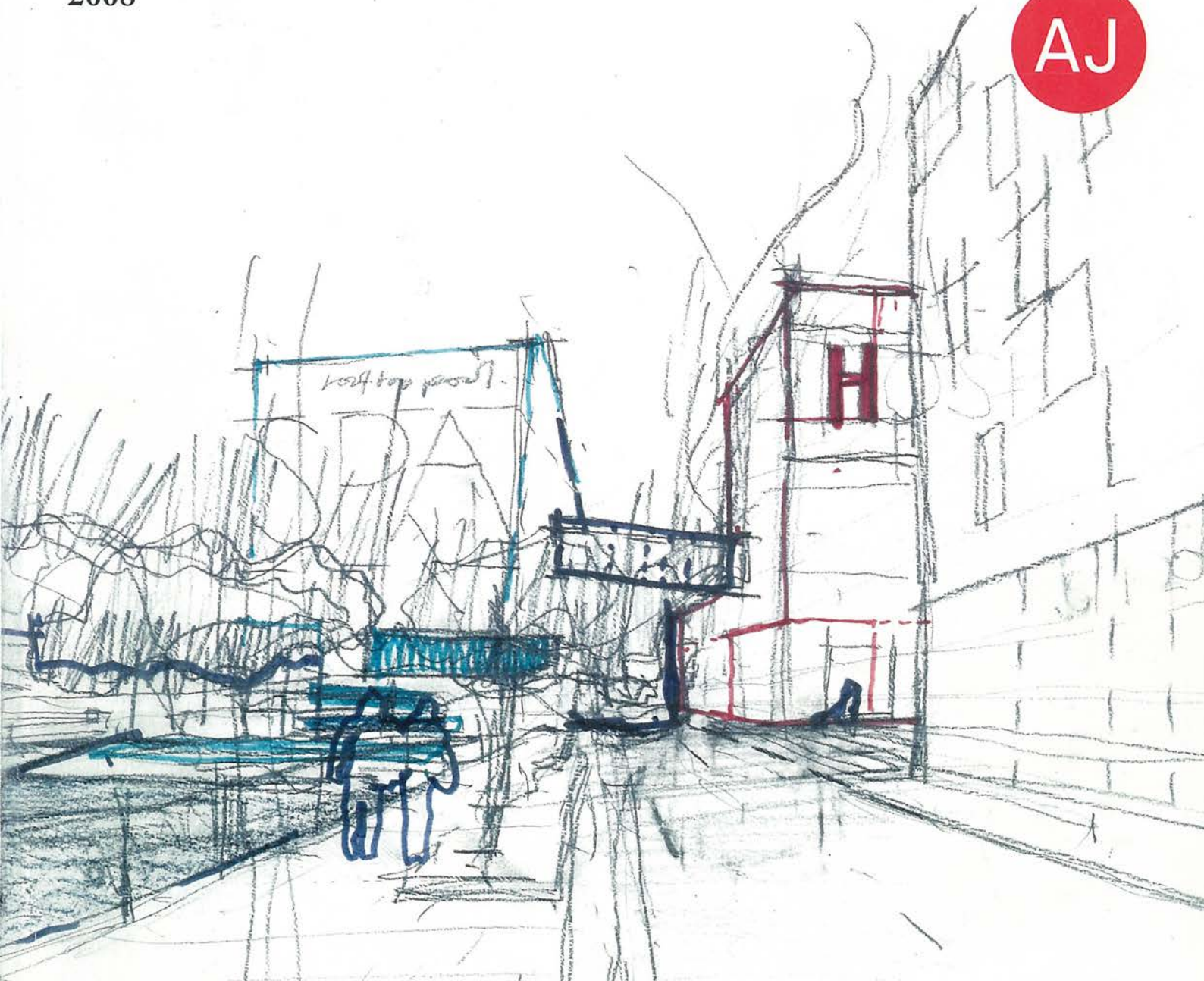


2008

AJ

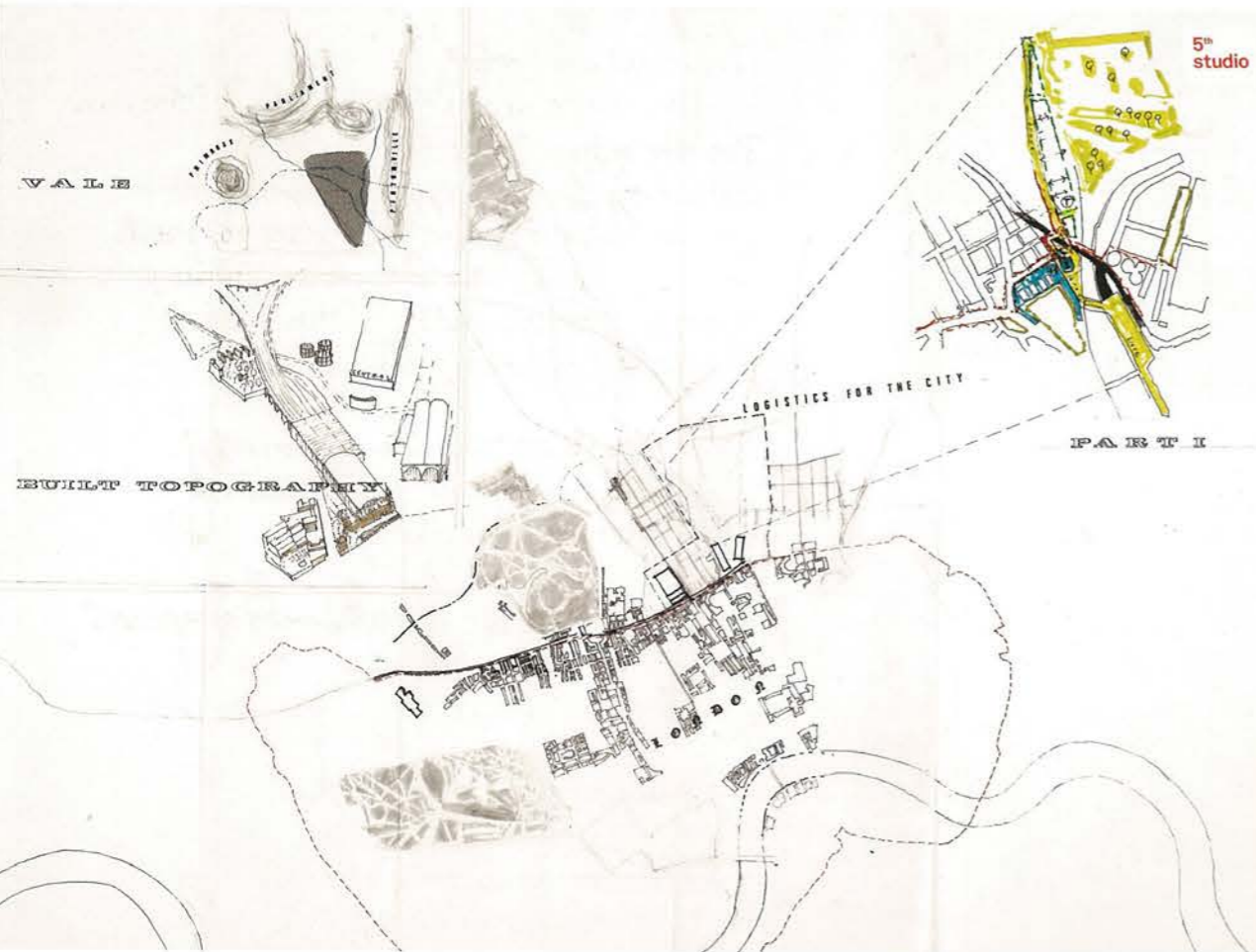
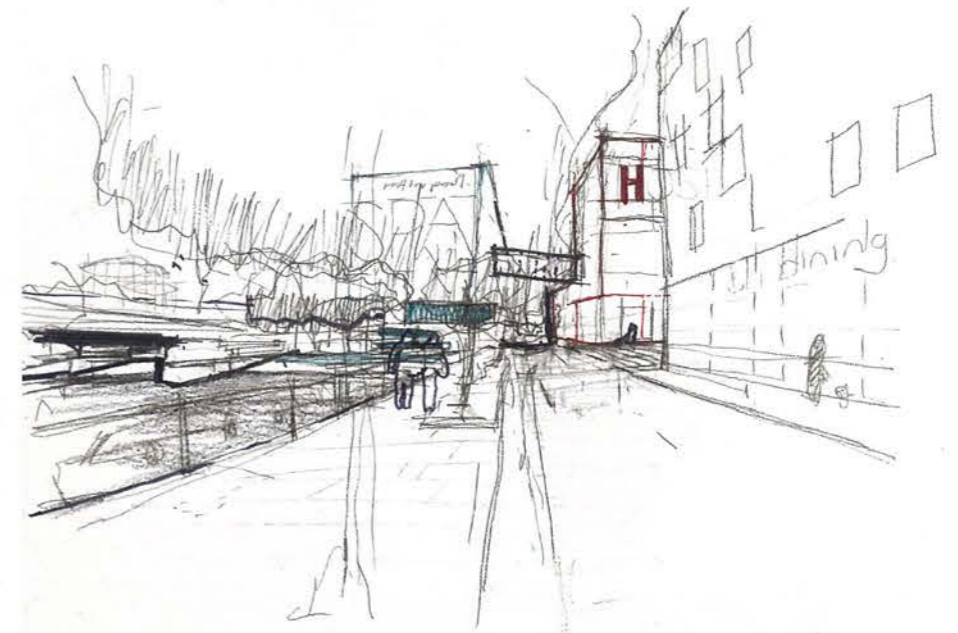


# King's Cross Charrette

## 5th Studio

Participants Tom Holbrook, Nathan Jones, Kieran Perkins

King's Cross is an important location for the white van economy and the huge amount of logistics needed to supply London with its desires and 'just-in-time' perishables. Stacking these present uses in the zone of slippage between the railway lines and Camley Street encloses them within proper, mixed urban fabric, making a safe route between King's Cross and Camden Road Station. As well as extending Camden's urban grain, we've brought to this space a remade St Pancras Hospital, the Camley Street Natural Park and a new world around St Pancras Lock. The scale of the infrastructure and strange level shifts across the site result in large areas of 'trapped nature' – we propose to unify these spaces into a wild reserve, or a resource for power production to support a low-carbon white van fleet.



Above Kieran Perkins, Tom Holbrook and Nathan Jones  
 Far left The concentration of the 'white van economy' (red) between green spaces (yellow) and remade St Pancras Hospital (green)  
 Below The concentrated 'logistics' area (red) increases traffic on nearby residential streets



### Where did you begin?

King's Cross still acts like the edge of the city. The site is in a damp valley – human settlement has tended to favour higher ground. The uses on site have created their own topography, like St Pancras and its great viaducts. Our proposal uses this strange scale to allow the city to take hold.

### What would you have done differently?

Nothing! The point of the day was to go with a hunch, to take a risk.

### What was it like to work without a computer?

We could concentrate on drawing, and found we didn't need to talk very much.

### What did you learn as a practice?

We realised we could use the formal charrette process ourselves to intensively tackle projects between our two studios. >>