

An aerial, black and white photograph of a city. In the upper center, the Olympic Park stadium is visible, characterized by its distinctive white, spiky roof structure. The rest of the image is filled with a dense urban landscape of various buildings, including several tall apartment blocks. The sky is overcast and grey.

STITCHING THE FRINGE

Working around the Olympic Park



Restructuring Infrastructure

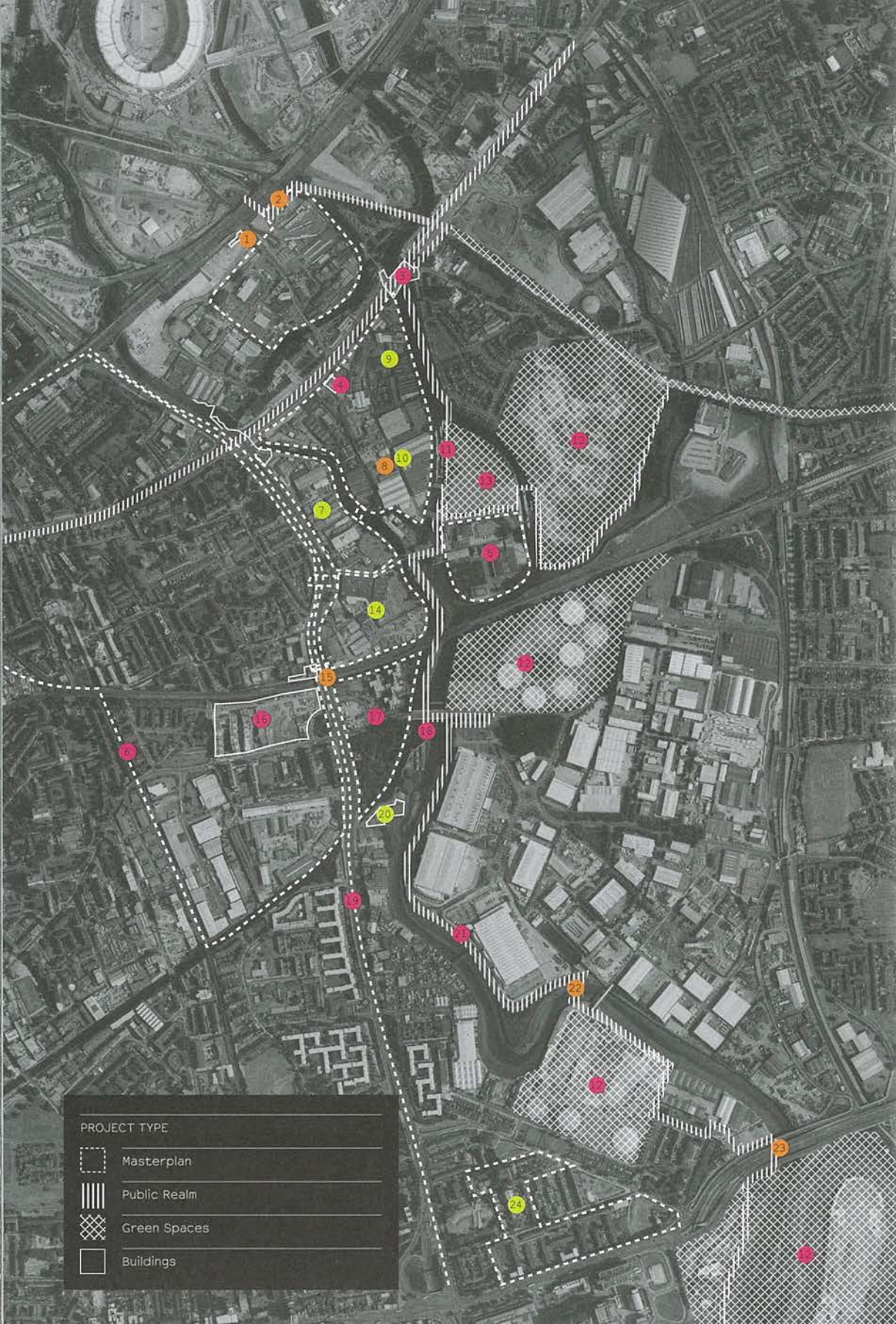
Sited to the south of the Park, Bromley-by-Bow and Three Mills is one of the most historic areas in the Lower Lea Valley, a fragmented tangle of housing and industry, waterways and roads. It is also one of the poorest, home to an expansive tract of council estates.

The challenge here is to forge a new town centre at this chaotic intersection of infrastructure, reconnecting disparate sites and improving access from existing communities to Bromley-by-Bow station and new amenities.

Development is focused on a number of key sites, including St Andrew's Hospital where a model of high density family housing has been realised and a new supermarket is proposed. The latter will not be a standalone shed, but integrated into the high street, as well as providing a new primary school and public park east of the A12.

Work includes improving links across this busy trunk road, essential to ensure that the existing communities to the west are able to fully access and benefit from the new facilities to the east. Across the canal, the careful redevelopment of the Sugar House Lane Conservation area is focused on retaining the existing qualities of the industrial workshops and yards.

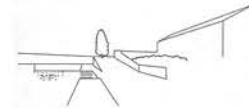
A series of north-south links are gradually being realised. Most significant is a series of projects to create a new spine between Bromley-by-Bow and the Park at Pudding Mill. New cycle and pedestrian routes to the River Lea are part of the Lea River Park project, stitching the 'Fatwalk' into the fabric of the Lea Valley and also improving access to the network of green spaces further up the valley.



1 Pudding Mill Lane Station: Initiated review process which led to the full redesign of the new station building, resulting in a highly successful proposal which draws on the industrial heritage of the area. (Weston Williamson Architects).



2 Greenway Ramp: Design options scoping for replacement pedestrian and cycle connection from Greenway to Pudding Mill Lane.



3 Fatwalk. Ramp and Groves Bridge: A wheelchair-accessible ramp along the historic towpath completing part of a link which will ultimately stretch from Three Mills Green into the Olympic Park. (5th Studio)

4 SugarHouse Studios: Established temporary community workshop project and cinema in an existing building on Sugar House Lane. (Assemble)

5 Three Mills Studios: Scoping study for design options to consolidate studio activities (Allies + Morrison)

6 Bromley-by-Bow Masterplan: Adopted Supplementary Planning Document providing a coordinated spatial strategy for Bromley-by-Bow (Urban Practitioners + East)

7 Bromley-by-Bow North: Planning application for a major residential-led

development including workshops and a vehicular bridge across the canal (John Thompson Architects)

8 SugarHouse Lane Land Use and Design Brief: Award-winning brief for mix of land uses, retention of existing spatial qualities and creative industries to inform proposed development. (Urban Practitioners, Landholt and Brown, Stephen Taylor)

9 SugarHouse Lane Conservation Area: Creation of a conservation area to ensure that the industrial heritage of Sugar House Lane will be integrated into future development.

10 Strand East: Design advisors to the planning authorities on the redevelopment of Sugar House Lane by InterIKEA.

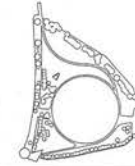
11 Fatwalk. Three Mills Green Edge: Creation of a new active canal-side landscape at Three Mills Green, incorporating table tennis tables, picnic tables, petanque and play. (5th Studio)



12 Lea River Park Strategy: Strategy creating a new park as the spine of regeneration in the Lea Valley from which new development can be established. (5th Studio)

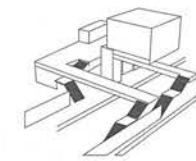


13 Three Mills Green: Part of the Lea River Park, transforming a non-descript and underused open space into a rich landscape supporting a range of activities. (Churchman Landscape)



14 Bromley-by-Bow Tesco: Major redevelopment contributing to the new town centre, incorporating an enlarged supermarket, primary school, public park, hotel, Idea Store, 700 new homes and a crossing to link this island site to Bromley-by-Bow. (Collado Collins Architects)

15 Bromley-by-Bow Station: Redesign of underground station at Bromley-by-Bow to improve accessibility. (TMA)



16 St Andrews: Exemplary new 800-unit housing development with DFL as the design client throughout project initiation and delivery. (Allies+Morrison, Glenn Howells, Maccreeor Lavington)

17 Bromley-by-Bow South East Quadrant: Spatial study examining principle routes and building form for this land-locked development site. (5th Studio)

18 Fatwalk: Twelve Trees lift: A new public lift and stair linking a listed bridge to the towpath level to complete the connection to the Fatwalk and beyond. (5th Studio)

19 A12 Connection Study: Study to increase pedestrian and cycle connectivity on and across the A12. (Peter Brett Associates)

20 Gillender Street: Proposal for a major new development at this pivotal canal-side site. (Allies + Morrison)

21 Fatwalk: Major new spine connecting the Olympic Park to the Thames 'completing' the last two miles of the 26-mile Lea Valley Park. (5th Studio)

22 Fatwalk Poplar Bridge: Bridge which connects Tower Hamlets and Newham and completed link to the River Thames. (5th Studio)



23 Fatwalk: A13 Connector: Public walk way along the historic bridge under the A13. (5th Studio)

24 Abelfeldy Estate Renewal: Ambitious project to invest in this existing deprived estate with new homes, community facilities and open space. (Levitt Bernstein, Maccreeor Lavington)

ROLE KEY

● Funding, commissioning and delivery of capital projects.

● Design Co-ordinator enabling and advising design integration of related projects.

● Statutory design officer providing design advice on mayoral planning applications.

Lea River Park

Fatwalk
 Architect: 5th Studio
 Budget: £16m
 Project Start: 2007
 Project Completion: July 2013



1.

1. The Lea River Park Strategy connecting the Thames to the Park won the International Urban Landscape Award for Strategy in 2010
2. Twelve Trees lift will connect two otherwise separate pieces of infrastructure to unify the towpath and complete the link
3. Poplar Bridge connects Newham to Tower Hamlets links the DLR to existing communities and forms a vital part of the Fatwalk link to the Thames
4. Bow Underpass designed by Adams and Sutherland and delivered in 2011 won the London Cycling Awards 2011



2.



3.



4.

The Lea River Park strategy won an International Urban Landscape Award for its vision for six new parks in the valley south of the Olympic Park. It realises Patrick Abercrombie's ambition contained within the 1944 London Plan envisioning the Lea as the spine of regeneration in the east, creating a cohesive link from the Thames to the Olympic Park via a network of large open spaces for current and future developments.

The Fatwalk towpath connects the Lea's source to the River Thames and is so called due to its generous width and activity programme. It is a route that connects these elements while delivering path infrastructure, land access rights, landscaping, mitigating levels and a walkway through a 100-year-old bridge. These are required to complete the 42-kilometre (26-mile) meandering route.